

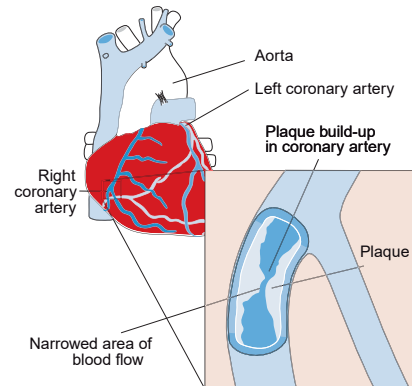
- DEFINITION** Tear in the fibrous, cord-like tissue connecting the papillary muscles to the valves, holding the valve flaps in place to prevent their eversion.
CC Ex: See Appendix
- I23.5 Rupture of papillary muscle as current complication following acute myocardial infarction** MCC HCC
EXCLUDES 1 *rupture of papillary muscle not specified as current complication following acute myocardial infarction (I51.2)*
CC Ex: See Appendix
- I23.6 Thrombosis of atrium, auricular appendage, and ventricle as current complications following acute myocardial infarction** CC HCC A
EXCLUDES 1 *thrombosis of atrium, auricular appendage, and ventricle not specified as current complication following acute myocardial infarction (I51.3)*
CC Ex: See Appendix
- I23.7 Postinfarction angina** CC HCC A
CODING TIP ✓ Post-infarction angina includes a syndrome of ischemic chest pain occurring either at rest or during minimal activity 24 hours or more following an acute MI. It is more common after NSTEMI. Post infarction angina is considered a complication (not simply angina after an MI) and must be documented by the physician.
 AHA: 2Q 2015, 16-17
CC Ex: See Appendix
- I23.8 Other current complications following acute myocardial infarction** CC HCC A
CC Ex: See Appendix
- I24 Other acute ischemic heart diseases**
EXCLUDES 1 *angina pectoris (I20.-) transient myocardial ischemia in newborn (P29.4)*
EXCLUDES 2 *non-ischemic myocardial injury (I5A)*
- I24.0 Acute coronary thrombosis not resulting in myocardial infarction** CC HCC
 Acute coronary (artery) (vein) embolism not resulting in myocardial infarction
 Acute coronary (artery) (vein) occlusion not resulting in myocardial infarction
 Acute coronary (artery) (vein) thromboembolism not resulting in myocardial infarction
EXCLUDES 1 *atherosclerotic heart disease (I25.1-)*
 AHA: 1Q 2013, 24
CC Ex: See Appendix
- I24.1 Dressler's syndrome** CC HCC
 Postmyocardial infarction syndrome
EXCLUDES 1 *postinfarction angina (I23.7)*
DEFINITION Fever, chest pain, pleuritis, and pericarditis weeks or months after heart injury caused by surgery or myocardial infarction.
CC Ex: See Appendix
- I24.8 Other forms of acute ischemic heart disease** CC HCC
EXCLUDES 1 *myocardial infarction due to demand ischemia (I21.A1)*
CC Ex: See Appendix
- I24.9 Acute ischemic heart disease, unspecified** CC HCC
EXCLUDES 1 *ischemic heart disease (chronic) NOS (I25.9)*
CC Ex: See Appendix
- I25 Chronic ischemic heart disease**
Use additional code to identify:
chronic total occlusion of coronary artery (I25.82)
exposure to environmental tobacco smoke (Z77.22)
history of tobacco dependence (Z87.891)
occupational exposure to environmental tobacco smoke (Z57.31)
tobacco dependence (F17.-)
tobacco use (Z72.0)
EXCLUDES 2 *non-ischemic myocardial injury (I5A)*

GUIDELINES Section I.C.9.b
 ICD-10-CM has combination codes for atherosclerotic heart disease with angina pectoris. The subcategories for these codes are I25.11, Atherosclerotic heart disease of native coronary artery with angina pectoris, and I25.7, Atherosclerosis of coronary artery bypass graft(s) and coronary artery of transplanted heart with angina pectoris.

When using one of these combination codes it is not necessary to use an additional code for angina pectoris. A causal relationship can be assumed in a patient with both atherosclerosis and angina pectoris, unless the documentation indicates the angina is due to something other than the atherosclerosis.

- I25.1 Atherosclerotic heart disease of native coronary artery**
 Atherosclerotic cardiovascular disease
 Coronary (artery) atheroma
 Coronary (artery) atherosclerosis
 Coronary (artery) disease
 Coronary (artery) sclerosis
Use additional code, if applicable, to identify:
coronary atherosclerosis due to calcified coronary lesion (I25.84)
coronary atherosclerosis due to lipid rich plaque (I25.83)
EXCLUDES 2 *atheroembolism (I75.-) atherosclerosis of coronary artery bypass graft (s) and transplanted heart (I25.7-)*
- I25.10 Atherosclerotic heart disease of native coronary artery without angina pectoris** A
 Atherosclerotic heart disease NOS
DEFINITION Clogging of coronary arteries with fatty plaque build-up, restricting blood flow and hardening the arteries.
 AHA: 4Q 2012, 92
 AHA: 4Q 2013, 128
 AHA: 2Q 2015, 17

Coronary atherosclerosis



- I25.11 Atherosclerotic heart disease of native coronary artery with angina pectoris**
CODING TIP ✓ When a patient presents with both coronary artery disease (CAD) / atherosclerotic heart disease and angina, a code from I25.11- should be assigned. If the specific type of angina is not specified in the clinical record, assign code I25.119.
- I25.110 Atherosclerotic heart disease of native coronary artery with unstable angina pectoris** CC HCC A
EXCLUDES 1 *unstable angina without atherosclerotic heart disease (I20.0)*
CC Ex: See Appendix
- I25.111 Atherosclerotic heart disease of native coronary artery with angina pectoris with documented spasm** HCC A
EXCLUDES 1 *angina pectoris with documented spasm without atherosclerotic heart disease (I20.1)*



<p>I25.118 Atherosclerotic heart disease of native coronary artery with other forms of angina pectoris HCC A EXCLUDES 1 <i>other forms of angina pectoris without atherosclerotic heart disease (I20.8)</i> AHA: 2Q 2015, 16-17</p> <p>I25.119 Atherosclerotic heart disease of native coronary artery with unspecified angina pectoris HCC A Atherosclerotic heart disease with angina NOS Atherosclerotic heart disease with ischemic chest pain EXCLUDES 1 <i>unspecified angina pectoris without atherosclerotic heart disease (I20.9)</i></p> <p>I25.2 Old myocardial infarction Healed myocardial infarction Past myocardial infarction diagnosed by ECG or other investigation, but currently presenting no symptoms GUIDELINES Section I.C.9.e.1) For old or healed myocardial infarctions not requiring further care, code I25.2 may be assigned.</p> <p>I25.3 Aneurysm of heart CC Mural aneurysm Ventricular aneurysm CC Ex: See Appendix</p> <p>I25.4 Coronary artery aneurysm and dissection</p> <p>I25.41 Coronary artery aneurysm Coronary arteriovenous fistula, acquired EXCLUDES 1 <i>congenital coronary (artery) aneurysm (Q24.5)</i></p> <p>I25.42 Coronary artery dissection MCC CC Ex: See Appendix</p> <p>I25.5 Ischemic cardiomyopathy EXCLUDES 2 <i>coronary atherosclerosis (I25.1-, I25.7-)</i></p> <p>I25.6 Silent myocardial ischemia</p> <p>I25.7 Atherosclerosis of coronary artery bypass graft(s) and coronary artery of transplanted heart with angina pectoris <i>Use additional code, if applicable, to identify: coronary atherosclerosis due to calcified coronary lesion (I25.84) coronary atherosclerosis due to lipid rich plaque (I25.83)</i> EXCLUDES 1 <i>atherosclerosis of bypass graft (s) of transplanted heart without angina pectoris (I25.812) atherosclerosis of coronary artery bypass graft (s) without angina pectoris (I25.810) atherosclerosis of native coronary artery of transplanted heart without angina pectoris (I25.811)</i></p> <p>I25.70 Atherosclerosis of coronary artery bypass graft(s), unspecified, with angina pectoris</p> <p>I25.700 Atherosclerosis of coronary artery bypass graft(s), unspecified, with unstable angina pectoris CC HCC A EXCLUDES 1 <i>unstable angina pectoris without atherosclerosis of coronary artery bypass graft (I20.0)</i> CC Ex: See Appendix</p> <p>I25.701 Atherosclerosis of coronary artery bypass graft(s), unspecified, with angina pectoris with documented spasm HCC A EXCLUDES 1 <i>angina pectoris with documented spasm without atherosclerosis of coronary artery bypass graft (I20.1)</i></p> <p>I25.708 Atherosclerosis of coronary artery bypass graft(s), unspecified, with other forms of angina pectoris HCC A EXCLUDES 1 <i>other forms of angina pectoris without atherosclerosis of coronary artery bypass graft (I20.8)</i></p>	<p>I25.709 Atherosclerosis of coronary artery bypass graft(s), unspecified, with unspecified angina pectoris HCC A EXCLUDES 1 <i>unspecified angina pectoris without atherosclerosis of coronary artery bypass graft (I20.9)</i></p> <p>I25.71 Atherosclerosis of autologous vein coronary artery bypass graft(s) with angina pectoris</p> <p>I25.710 Atherosclerosis of autologous vein coronary artery bypass graft(s) with unstable angina pectoris CC HCC A EXCLUDES 1 <i>unstable angina without atherosclerosis of autologous vein coronary artery bypass graft (s) (I20.0)</i> EXCLUDES 2 <i>embolism or thrombus of coronary artery bypass graft (s) (I82.8-)</i> CC Ex: See Appendix</p> <p>I25.711 Atherosclerosis of autologous vein coronary artery bypass graft(s) with angina pectoris with documented spasm CC HCC A EXCLUDES 1 <i>angina pectoris with documented spasm without atherosclerosis of autologous vein coronary artery bypass graft (s) (I20.1)</i> CC Ex: See Appendix</p> <p>I25.718 Atherosclerosis of autologous vein coronary artery bypass graft(s) with other forms of angina pectoris CC HCC A EXCLUDES 1 <i>other forms of angina pectoris without atherosclerosis of autologous vein coronary artery bypass graft (s) (I20.8)</i> CC Ex: See Appendix</p> <p>I25.719 Atherosclerosis of autologous vein coronary artery bypass graft(s) with unspecified angina pectoris CC HCC A EXCLUDES 1 <i>unspecified angina pectoris without atherosclerosis of autologous vein coronary artery bypass graft (s) (I20.9)</i> CC Ex: See Appendix</p> <p>I25.72 Atherosclerosis of autologous artery coronary artery bypass graft(s) with angina pectoris Atherosclerosis of internal mammary artery graft with angina pectoris</p> <p>I25.720 Atherosclerosis of autologous artery coronary artery bypass graft(s) with unstable angina pectoris CC HCC A EXCLUDES 1 <i>unstable angina without atherosclerosis of autologous artery coronary artery bypass graft (s) (I20.0)</i> CC Ex: See Appendix</p> <p>I25.721 Atherosclerosis of autologous artery coronary artery bypass graft(s) with angina pectoris with documented spasm CC HCC A EXCLUDES 1 <i>angina pectoris with documented spasm without atherosclerosis of autologous artery coronary artery bypass graft (s) (I20.1)</i> CC Ex: See Appendix</p> <p>I25.728 Atherosclerosis of autologous artery coronary artery bypass graft(s) with other forms of angina pectoris CC HCC A EXCLUDES 1 <i>other forms of angina pectoris without atherosclerosis of autologous artery coronary artery bypass graft (s) (I20.8)</i> CC Ex: See Appendix</p> <p>I25.729 Atherosclerosis of autologous artery coronary artery bypass graft(s) with unspecified angina pectoris CC HCC A EXCLUDES 1 <i>unspecified angina pectoris without atherosclerosis of autologous artery coronary artery bypass graft (s) (I20.9)</i> CC Ex: See Appendix</p>
--	--

● New

Manifestation

Digit Indicators

Laterality

A Adult

M Maternity

N Newborn

P Pediatric
(0-17 years)

♂ Male

▲ Revised

Unspecified

AHA Coding Clinic

HIV HIV Related Conditions

♀ Female